

the **FRANKIE**

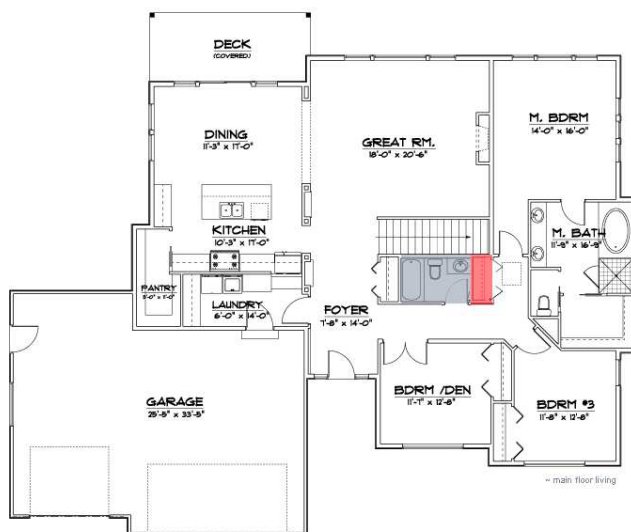
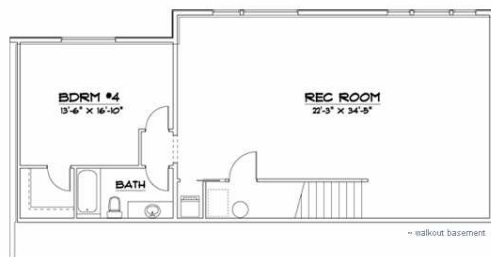
15210 Grand View Lane, Kennewick :: 4 bedroom :: 3 bath :: 3 car garage :: 3221 sq ft
FLAWLESS FUNCTIONALITY & CONTEMPORARY STYLE



tamara parisio ~ conceptual rendition

This Frank Lloyd Wright inspired home boasts over 3200 square feet of living space. On the main floor, enter to find a great room a spectacular view of sky and sprawling vista. This splendid room is warmed by sunshine and a fireplace. The open layout leads into the sun lit dining room and entertainer's kitchen with an island-bar and a large pantry. The master bedroom is also enhanced by the view. The spa-style Master bath and walk in closet complete the private retreat. Two bedrooms plus a full bath provide perfect added accommodations (one could easily be an office or den if desired). A full laundry/mud room services the home, leads from the three car garage.

Downstairs, an ample recreation/media room walks out to the sprawling yard. An ensuite bedroom could be a wonderful retreat for guests. A separate laundry hook up is included for stackable washer/dryer on this lower floor. Plenty of storage could even be used for wine ...



This stunning home designed by Tamara Parisio ~ Art & Industry, is being built by Jim McAloon Construction. It is expected to be completed late summer 2010. Offered at \$429,000.

For more information, contact:

Doug Parisio 509-628-0716
LIC#DPPREPW907JM

Jim McAloon 509-521-7202
LIC#JIMMMCL981JK

